

ARCHITECTURE  
PORTFOLIO

Selected Works  
2021-2023

JUNIOR ARCHITECT  
REYNARD TANUWIJAYA

## LIST OF CONTENTS

01



02



03



04



05



06



07



# LIST OF CONTENTS

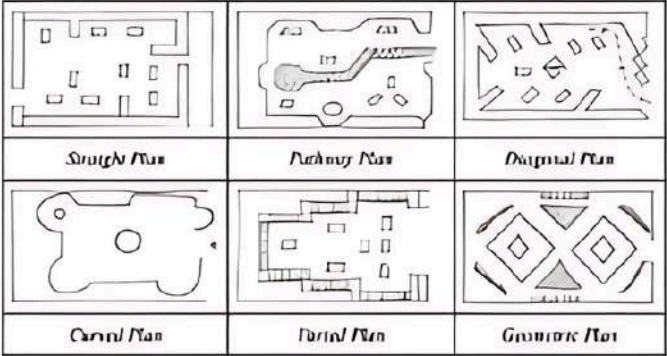
---



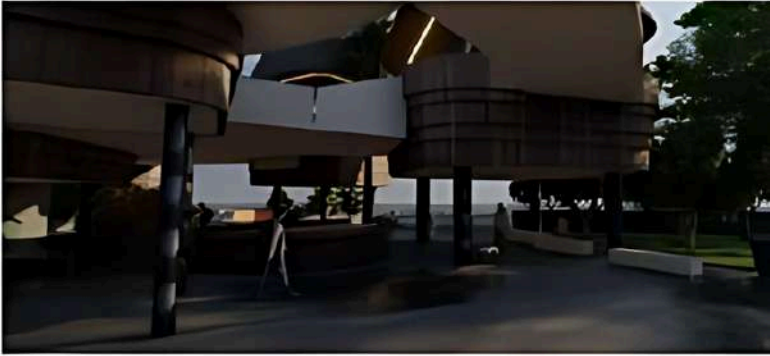


ENVIRONMENTAL FRIENDLY  
IN  
BATU HIU  
TO SUPPORT THE EXPOSURE OF BATU HIU,  
PANGANDARAN.

THE CONCEPT OF BUILDING PRIORITIES TO HEALTH AND ENVIRONMENTAL FRIENDLY. WHERE THE BUILDING IS FORMED TO SUPPORT THE SURROUNDINGS. WHERE PROVIDE A LOT OF GREEN SPACE ESTABLISHED TO BE ACCESSED BY PEDESTRIANS WHEN VISITING THE BUILDING. WITH THE CONCEPT OF AN OPEN AND ENVIRONMENTALLY FRIENDLY BUILDING, THIS BUILDING CAN INVITE PEOPLE SURROUNDINGS TO USE THE PUBLIC FACILITIES IN THE BUILDING. EVEN THOUGH THIS BUILDING RECEIVES PEOPLE AT ANY TIME IN 24 HOURS, BUT DOES NOT REMOVE THE BUILDING'S PRIVACY. BY INCREASING THE LEVELS OF THE BUILDING AND THE LIMITATION WITH A LARGE TREE SO THE SOUNDS CAN BE MILLED AND NOT SO LOUD IN THE EARS OF PEOPLE WHO ARE RESTING IN THIS BUILDING.



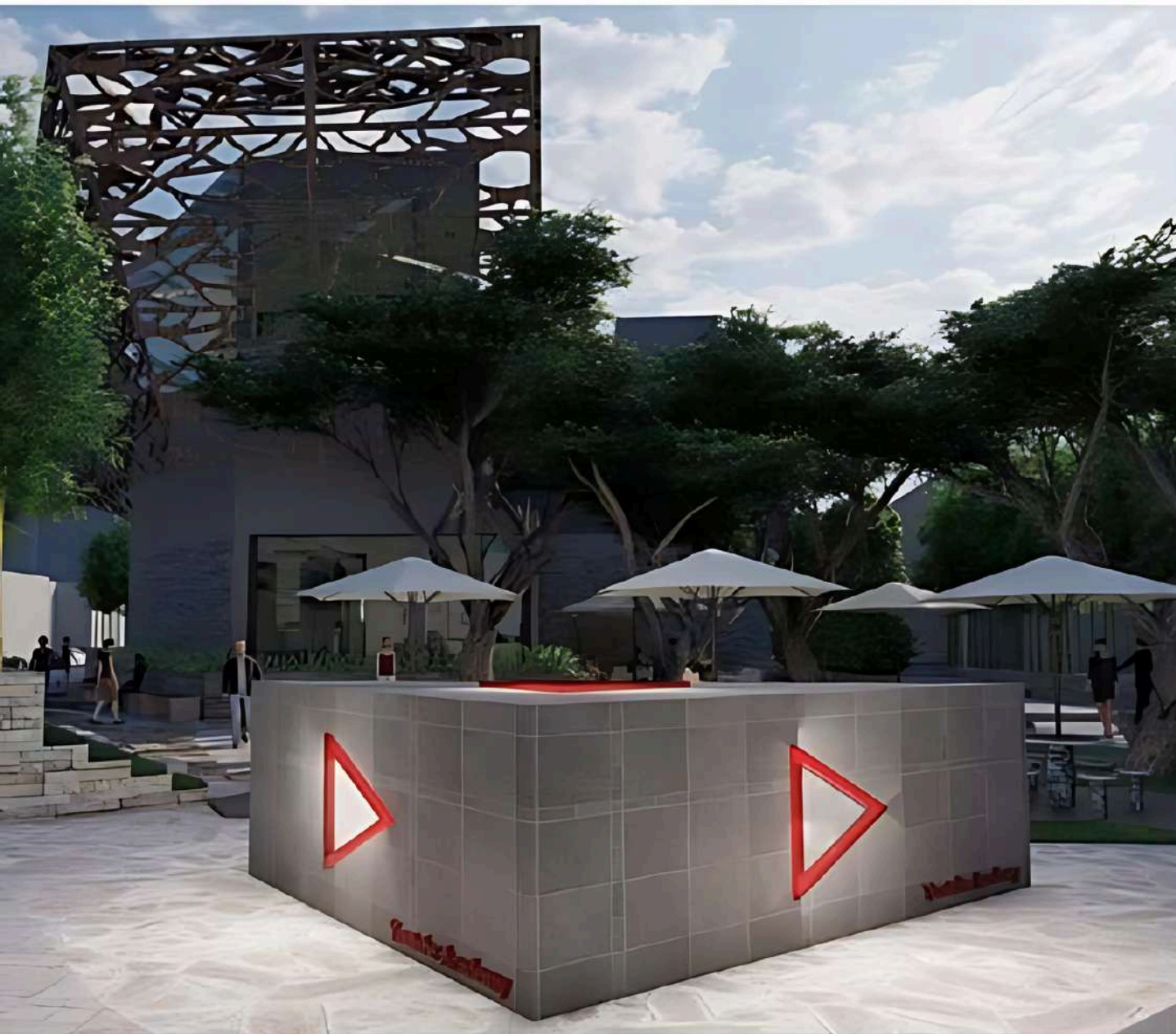
Architecture Dwelling  
Books



Communal Area



## YOUTUBER ACADEMY



Green Area

### Academy For Content Creator IN *Bandung* TO SUPPORT CURENT MEDIA IN ORDER TO HAVE A BENIFICIAL CONTENT.

THE PROPOSED PROGRAM IS A FUNCTION TO INCREASE THE CREATIVITY OF SOCIAL MEDIA CONTENT CREATORS IN INDONESIA SO THAT THEY ARE NOT LESS COMPETITIVE THAN OVERSEAS. IN TERMS OF EDITING, IDEAS, CONCEPTS, WITHOUT ELIMINATING THE CHARACTERISTICS OF CONTENT CREATORS IN INDONESIA WHO TEND TO WANT TO ATTRACT ATTENTION WITH THEIR SILLY ACTIONS. AND ALSO DOES NOT ELIMINATE THE CHARACTERISTICS OF INDONESIAN CULTURE. REFERRING TO THE LIFESTYLE OF PEOPLE WHO CURRENTLY USE MASS MEDIA, ESPECIALLY THROUGH THE INTERNET, YouTube IS ONE OF THE MOST POPULAR SOCIAL MEDIA BY THE PUBLIC. YouTube IS A SHARING WEBSITE. THIS SITE ALLOWS USERS TO UPLOAD, WATCH AND SHARE VIDEOS. BASED ON DATA PRESENTED BY THE MINISTRY OF COMMUNICATION AND INFORMATION IN FRONT OF A WORKING MEETING WITH COMMISSION I OF THE HOUSE OF REPRESENTATIVES, TUESDAY (28/11), IN THE JANUARY-OCTOBER 2017 PERIOD, THERE WERE 51,456 NEGATIVE CONTENT ON THE INTERNET BASED ON PUBLIC COMPLAINTS

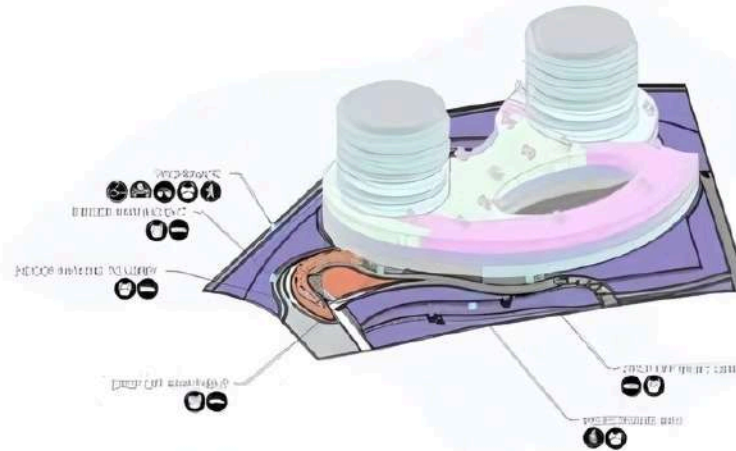
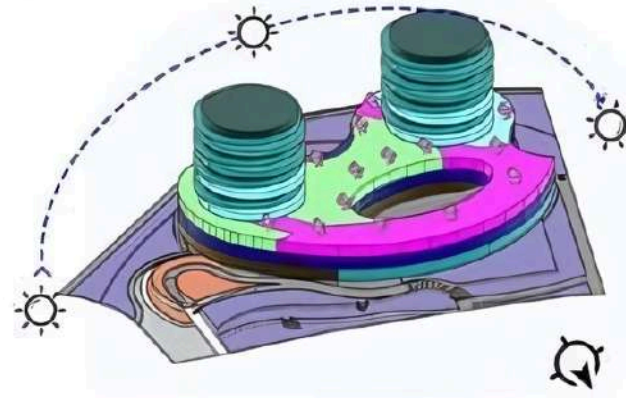
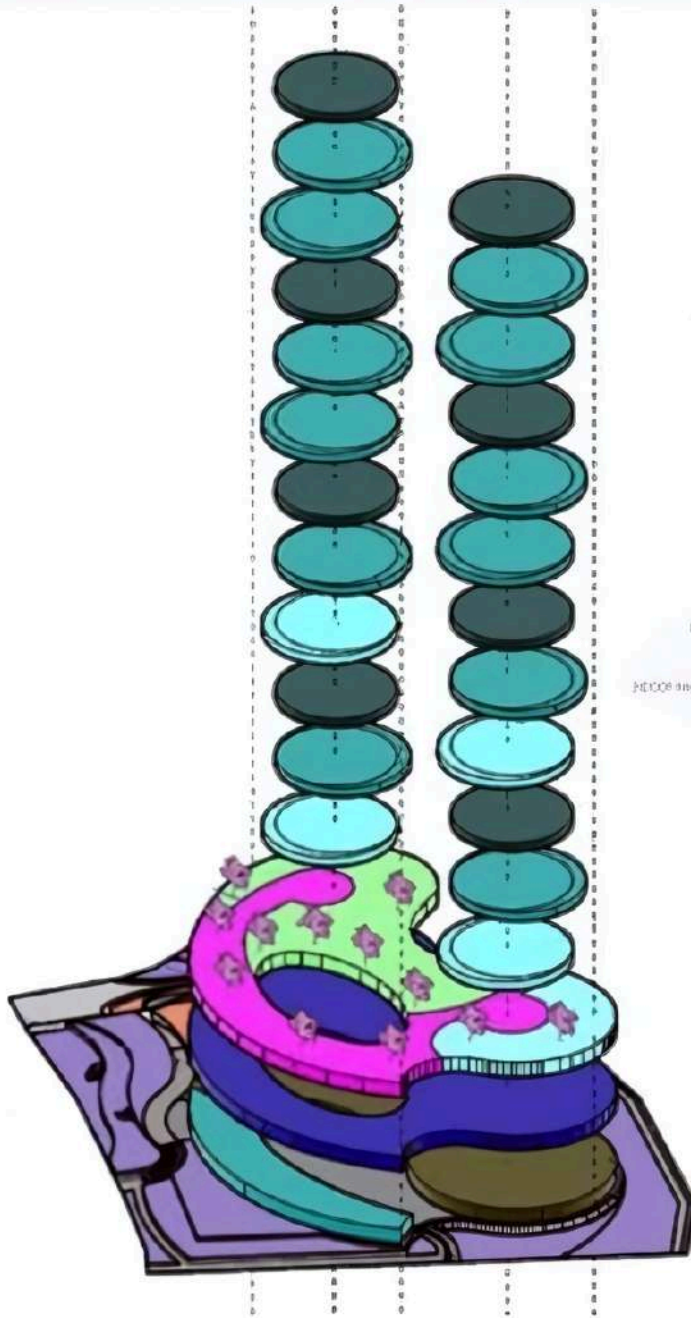




## MILLENTIUS CENTRUM

03

Project 3  
Millentius Centrum  
In Pantai Indah Kapuk 2,  
Tangerang



## MIXED USE WA- TERFRONT IN PIK 2 TO SUPPORT ENVIRON- MENTAL OF PIK 2, TANGGERANG.

THE CONCEPT OF BUILDING PRIORITIES TO HEALTH AND ENVIRONMENTAL FRIENDLY WHERE THE BUILDING IS FORMED TO SUPPORT THE SURROUNDINGS. WITH THE CONCEPT OF AN OPEN AND ENVIRONMENTALLY FRIENDLY BUILDING, THIS BUILDING CAN INVITE PEOPLE IN THE NEIGHBORHOOD TO USE THE PUBLIC FACILITIES IN THE BUILDING.

THE IN BETWEEN SPACE CONCEPT APPLIED BY SOU FUJIMOTO IS APPLIED IN THIS BUILDING WHERE IT PROVIDES A LOT OF OPEN SPACE AND DOESN'T BLOCK ONE PART WITH A FULL WALL SO PEOPLE INSIDE CAN FEEL CONNECTED WITH THE PUNKI OUTDOOR SPACE,

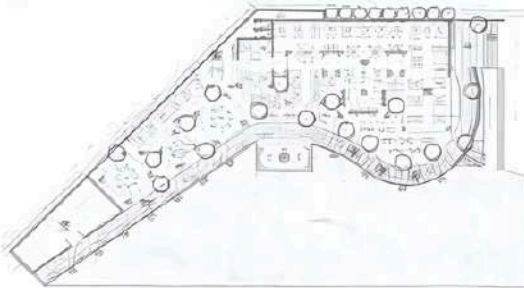
A GARDEN FEATURE WHERE IT GIVES SPACE FOR PEOPLE TO ENJOY THE OUTDOOR SPACE AND GET A VIEW FROM ABOVE. AND ALSO GIVES FRESHNESS AND SPACE FOR RELAXATION FROM OLD STRESS IN THE INDOOR.



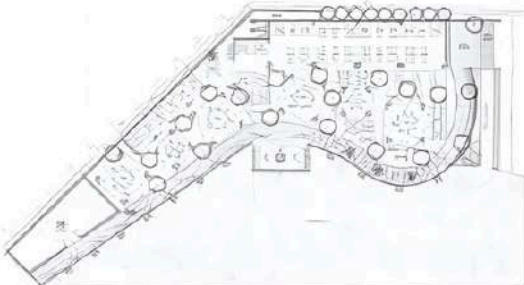


## RENDERING Cafe Project.

THIS PROJECT HAS A UNIQUE CONCEPT DESIGNED TO CREATE AN OASIS-LIKE IMPRESSION FOR VISITORS OR CONSUMERS WHO COME. THE CONCEPT IS UTILIZED TO GIVE VISITORS THE FEELING OF ENJOYING FOOD AT THE BEACH. THIS PROJECT IS LED BY PROFESSIONAL ARCHITECTS, WITH MY ASSISTANCE IN 3D MODELING AND RENDERING. THE ONE THAT WE MUST CONCERN AS A DESIGNER IS THE QUANTITY OF SEAT ON THIS CAFE. BECAUSE IT'S A BUSINESS SO WE NEED TO THINK HOW TO MAKE THE CLIENT GAIN MORE MONEY FROM OUR DESIGN.



FLOOR PLAN ALTERNATIVE 1



FLOOR PLAN ALTERNATIVE 2





## HOUSE INTERIOR IN TAMBORA

TO SUPPORT CLIENT NEED  
TAMBORA, JAKARTA.

THE INTERIOR IS DESIGNED IN SUCH A WAY THAT THE CONCEPT IS ENTIRELY REALIZED THROUGH MARBLE-PATTERNED MATERIALS, USING HOMOGENOUS TILES ALONG WITH MARBLE-PATTERNED HIGH-PRESSURE LAMINATE (HPL). THE OWNER DESIRES A FULLY FINISHED HOME ATMOSPHERE THAT EXUDES LUXURY AND SOPHISTICATION.

THE OWNER DOES NOT APPRECIATE THE CURRENT TRENDING INDUSTRIAL CONCEPT BECAUSE, IN THEIR OPINION, A HOME IS A PLACE FOR REST AND TRANQUILITY. IN THIS REGARD, I PROPOSED MATERIALS THAT CONVEY A LUXURIOUS FEEL BUT ARE COST-EFFECTIVE, CONSIDERING THE VERY LIMITED LAND AREA. TO MAXIMIZE THE BUDGET AND AVOID WASTAGE OF LARGE-SIZED MATERIALS, THE SOLUTION HERE IS TO UTILIZE PROCESSED MATERIALS



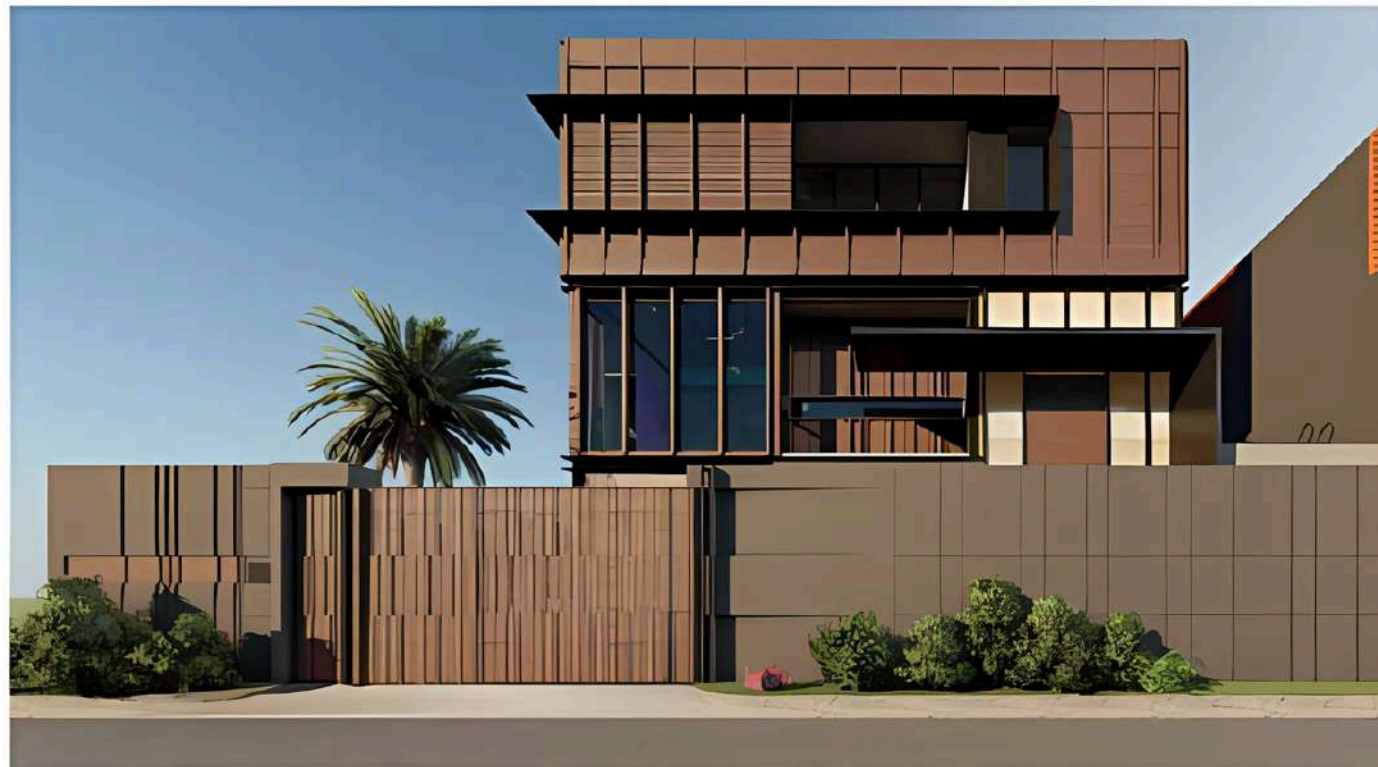


# FENG'S HOUSE IN SUNTER

TO SUPPORT CLIENT NEED  
ON FENGSHUI,  
SUNTER, JAKARTA.

THIS PROJECT IS THE CREATION OF THE RE-  
NOWNED ARCHITECT, ATELIER COSMAS  
GOZALI. MY ROLE INVOLVES ASSISTING HIM  
IN REALIZING AND VISUALIZING THE PROJ-  
ECT TO BE PRESENTED TO THE OWNER.  
THE COMPLEXITY LEVEL OF THIS PROJECT  
IS DIFFERENT FROM OTHER RESIDENTIAL  
PROJECTS DUE TO THE STRICT FENG SHUI  
PRINCIPLES, IMPOSING RULES AND LIMITA-  
TIONS ON THE DESIGN. THESE FENG SHUI  
RULES MAKE THE BUILDING RIGID, RESTRICT-  
ING THE INCORPORATION OF TOO MANY  
ANGLES. CONSEQUENTLY,

THE BUILDING TAKES THE FORM OF A CUBE  
AT THE CENTRAL POINT OF THE SITE. TO  
ENSURE THE STRUCTURE DOESN'T APPEAR  
MASSIVE COMPARED TO NEIGHBORING  
HOUSES, A SECOND LAYER IS ADDED TO  
THE BUILDING'S FACADE USING ENGINEERED  
WOOD. THE THICKNESS VARIATION IN THIS  
LAYER CREATES A VISUALLY APPEALING  
CURVATURE TO THE FACADE.

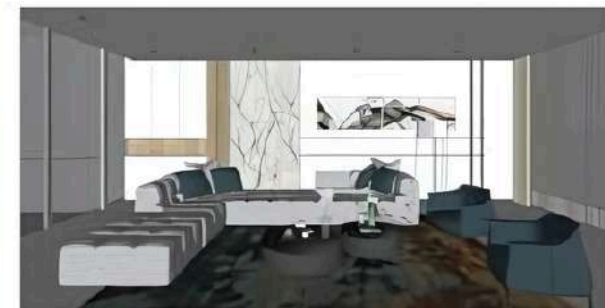




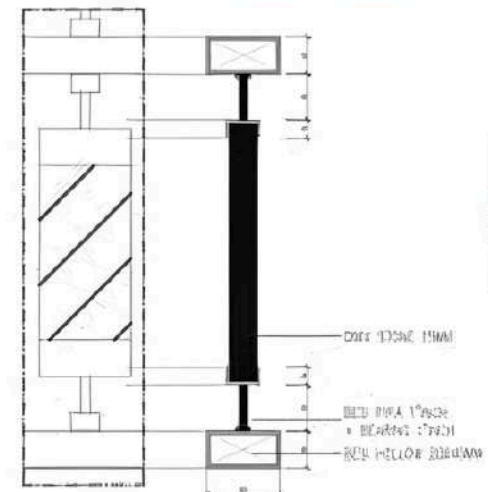
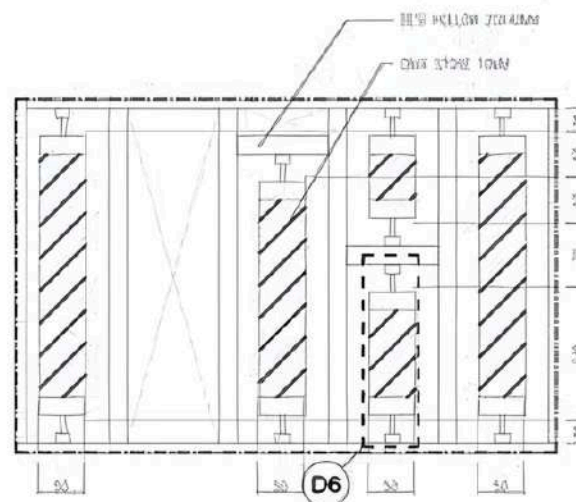
## PRIVATE HOUSE IN KELAPA GADING, JAKARTA

THE CONCEPT OF THIS PROJECT IS INSPIRED BY THE ARCHITECT SOU FUJIMOTO, WHO PRIORITIZES THE CREATION OF TRANSPARENT SPACES TO BRING HUMAN ACTIVITIES CLOSER TO NATURE. IT CONVEYS A MESSAGE TO HUMANITY ABOUT THE IMPORTANCE OF THE BEAUTY OF NATURE. THE CLIENT ENVISIONS THIS BUILDING TO BE A COMFORTABLE PLACE FOR RELAXATION. DUE TO THE PROJECT'S LOCATION IN NORTH JAKARTA, WHERE THE MAJORITY OF THE POPULATION IS OF CHINESE DESCENT, THE BUILDING IS DESIGNED TO BE AS SIMPLE AND LUXURIOUS AS POSSIBLE.

08



Project 8  
VGI House,  
Kelapa Gading,  
Jakarta





## B PRIVATE HOUSE

### FREELANCING

IN

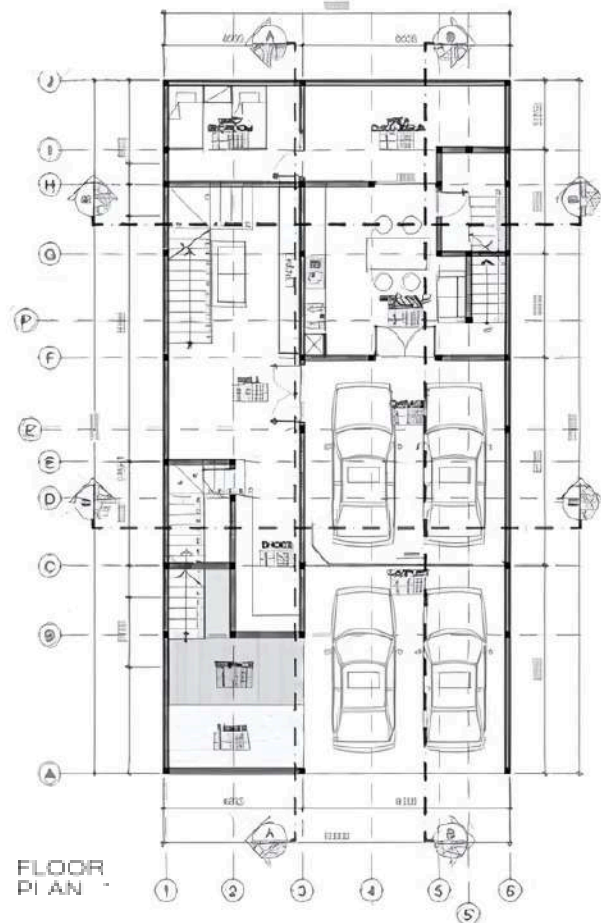
JAKARTA

TO PROVIDE

CLIENT

NEED.

THIS PROJECT IS A PRIVATE RESIDENCE REQUESTED BY THE OWNER, SITUATED ON A LIMITED SITE WITH A BUDGET CONSTRAINT THAT IS NOT TOO HIGH. AS A RESULT, THE USE OF MATERIALS IS MINIMIZED TO ACCOMMODATE THE BUDGET. THE SOLUTION TO THIS CHALLENGE INVOLVES EMPLOYING MINIMALIST MATERIALS TO ADDRESS THE CONSTRAINTS EFFECTIVELY.



09

Project 9  
Freelancing  
B House,  
Jakarta







# LETJEN MT. HARJONO HOUSE IN KELAPA GADING,

THIS HOUSE HOLDS MANY BAD MEMORIES FOR THE MT HARJONO FAMILY IN THE PAST. THE HOUSE BORE WITNESS TO THE BLOODSHED OF LIEUTENANT GENERAL MT HARJONO WHO WAS SHOT DURING THE G30S/PKI MOVEMENT.

10



Project 10  
Letjen MT. Harjono  
Museum,  
Jakarta

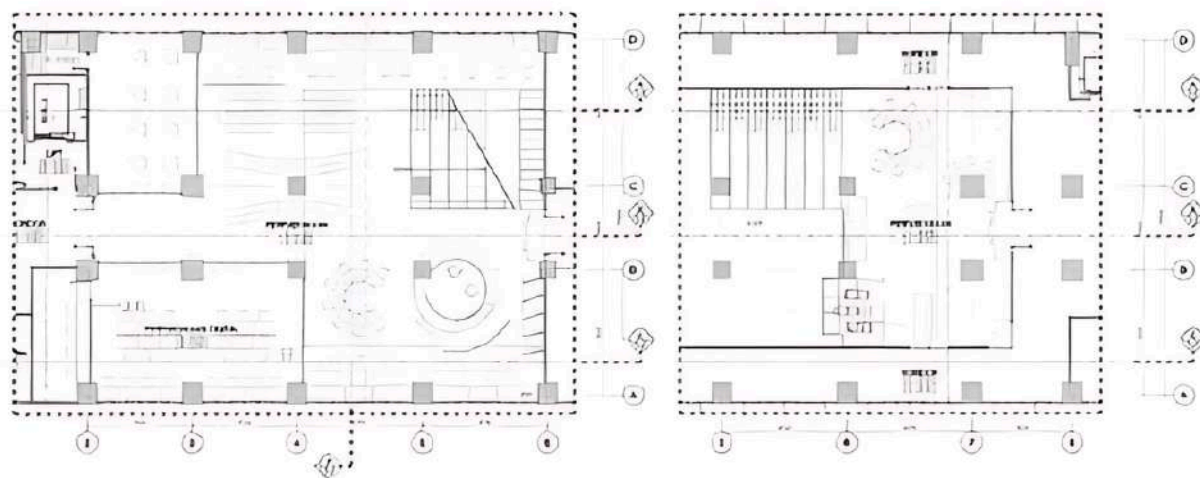






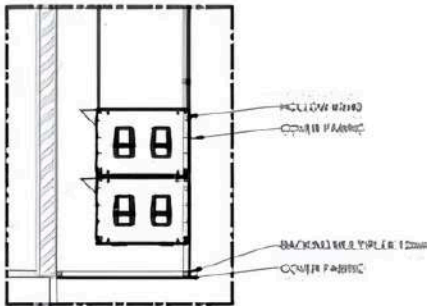
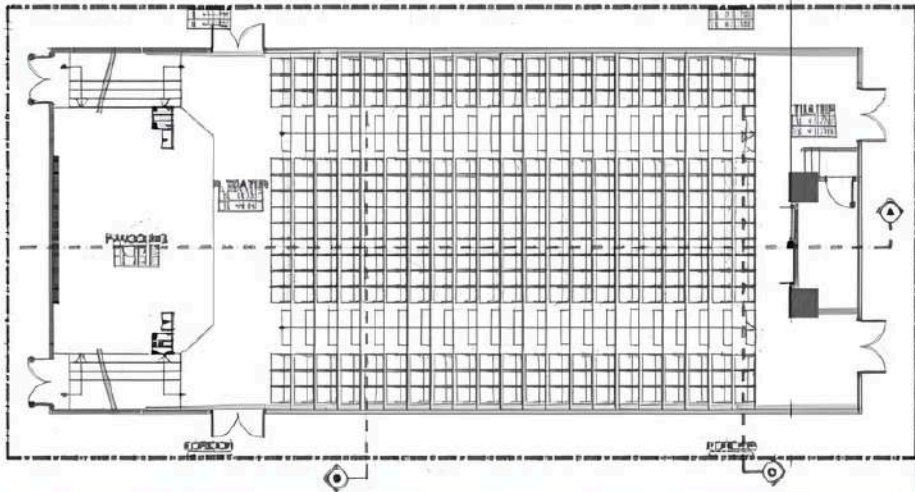
## LIBRARY INTERIOR IN CC SCHOOL, PROJECT DONE, JAKARTA.

THE LIBRARY INTERIOR HAS A MODERN CONCEPT DESIGNED TO SUPPORT STUDENTS' NEEDS FOR DISCUSSIONS AND LEARNING THROUGH VARIOUS METHODS.

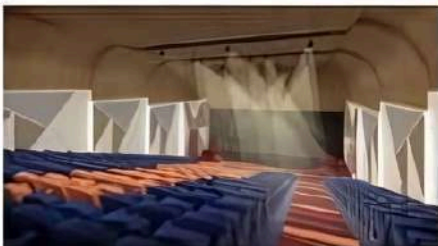
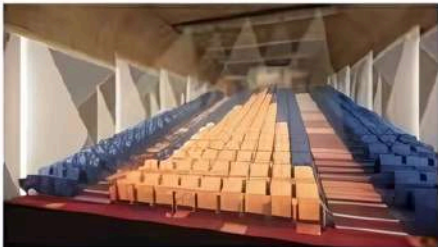


THEATER INTERIOR  
IN  
CC SCHOOL, PROJECT  
DONE, JAKARTA.

THE THEATER IS ONE OF THE MAIN FOCAL POINTS IN THIS SCHOOL BUILDING. THE SCHOOL DESIRES A SPACE THAT CAN BE UTILIZED FOR SHARING SESSIONS WITH THE STUDENTS. DUE TO THE SPECIFIC POINTS THAT NEED ATTENTION IN THIS SCHOOL, THE CONSULTANT IS PROVIDING SPECIAL TREATMENT TO THE DESIGN OF THIS THEATER. HOWEVER, DUE TO LIMITED SPACE, THE ARCHITECT HAD TO MANAGE IT TO ENSURE THAT THE AREA HAS SUFFICIENT CAPACITY FOR A SIGNIFICANT NUMBER OF STUDENTS, WITHOUT OVER-LOOKING SAFETY FACTORS.



12



Project 12  
CC School,  
Interior Theater,  
Jakarta







## PHAROS PENT- HOUSE IN TANGGERANG, ON GOING BSD CITY.

THE THEATER IS ONE OF THE MAIN FOCAL POINTS IN THIS SCHOOL BUILDING. THE SCHOOL DESIRES A SPACE THAT CAN BE UTILIZED FOR SHARING SESSIONS WITH THE STUDENTS. DUE TO THE SPECIFIC POINTS THAT NEED ATTENTION IN THIS SCHOOL, THE CONSULTANT IS PROVIDING SPECIAL TREATMENT TO THE DESIGN OF THIS THEATER. HOWEVER, DUE TO LIMITED SPACE, THE ARCHITECT HAD TO MANAGE IT TO ENSURE THAT THE AREA HAS SUFFICIENT CAPACITY FOR A SIGNIFICANT NUMBER OF STUDENTS, WITHOUT OVERLOOKING SAFETY FACTORS.

